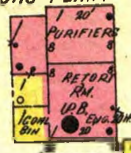


GAS TANK
CAPCY. 30,000 CU. FT.

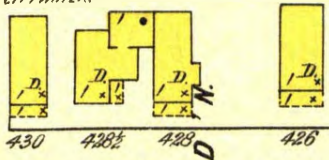
GAS TANK
CAPCY. 1,000
CU. FT.

GAS PLANT



18
**EXCELSIOR SPRINGS LIGHT,
POWER, HEAT & WATER CO.**

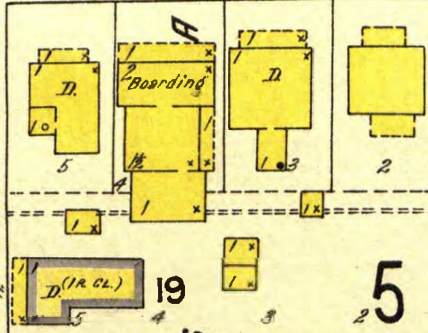
NO WATCHMAN - NO LIGHTS - FUEL:
COAL & COKE - HEAT: STEAM -
CITY WATER.



430 428 428 D 426

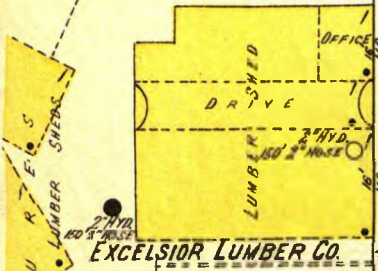
W. EXCELSIOR

429 427 425

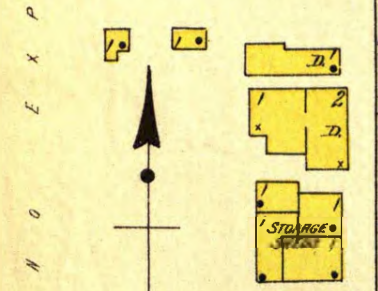
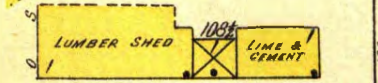


5
D. (1R. CL.) 19

5



EXCELSIOR LUMBER CO.



114

112

110

4 M.P.

108

106

104 1/2

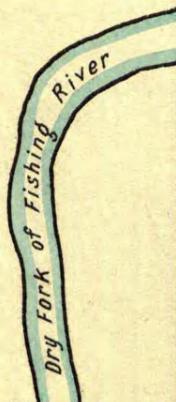
104

103

102

MILL

CRAVEN'S



N O E X P O S U R E