

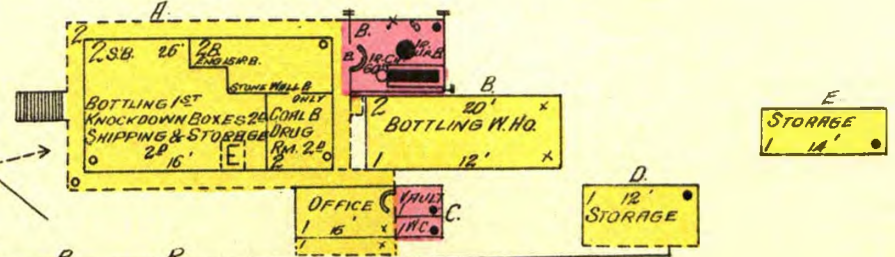
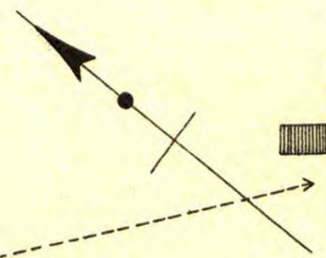


R E G E N T P A R K

Fishing River

### EXCELSIOR SPRINGS & MINERAL WATER BOTTLING CO

HEAT - STEAM IN BOTTLING WORKS & 2 STOKES IN OFF. -  
LIGHTS ELEC - POWER - STEAM & ELEC. - FUEL - COAL. -  
CEMENT FL. IN B. - 2 WATER BBL. ON 2D FL. & 1 ON 1ST FL., EACH  
HAVING 2 BUCKETS. - 150 1/2" & 1" RUBBER HOSE.



H I L L S I D E B E Y O N D