

REGENT  
SPRING  
PAVILION

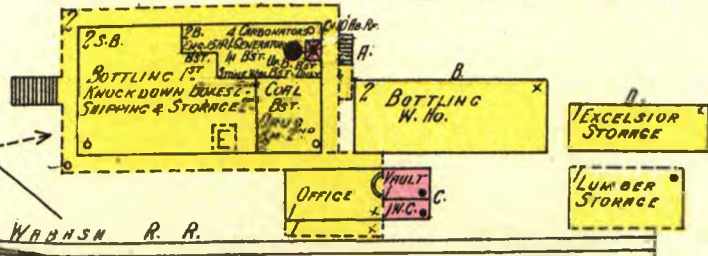
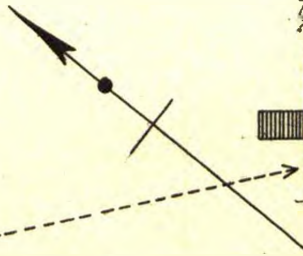
R E G E N T

P A R K

Fishing River

### EXCELSIOR SPRINGS BOTTLING Co.

ONE NIGHT WATCHMAN, PORTABLE CLOCK, POWER: STEAM, FUEL: COAL.  
LIGHTS: ELECTRIC HEAT STEAM IN BOTTLING WORKS & 25 LUMES IN OFFICE. CEILING FLOOR IN BOST.  
2 WATER BARRELS ON 2<sup>ND</sup> FLOOR. #1 ON 1<sup>ST</sup> FLOOR. EACH HAVING 2 DUCKETS, 150' B & 1 RUBBER ROSE.



D.H.