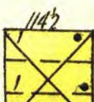
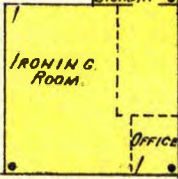


Dry Fork of Fishing River

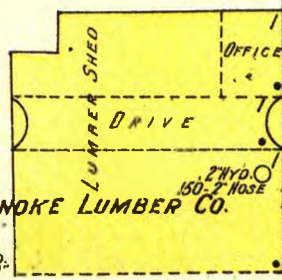
EXCELSIOR LAUNDRY
 HEAT: STEAM, LIGHTS: ELEC.
 CITY WATER, FUEL: COAL,
 NO WATCHMAN.



COAL NO. 1
 No. 30
 Exc. 151P



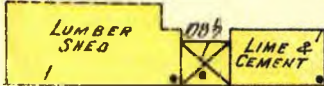
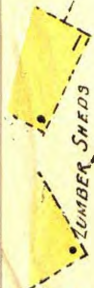
114



112

ROANOKE LUMBER CO.

2 1/2" D.
 150" N.
 NOSE



110

(NORTH-SOUTH)

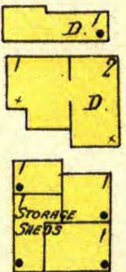
108

106

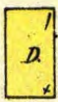
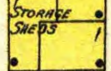
104

102

30'



MILL



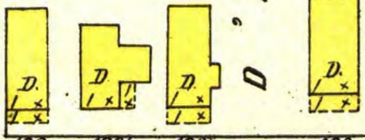
N O



18

EXCELSIOR SPRINGS LIGHT POWER, HEAT & WATER CO.
 HEAT: STEAM, NO LIGHTS, FUEL: COAL & COKE
 NO WATCHMAN, CITY WATER.

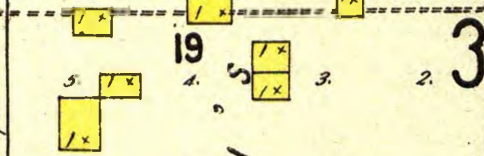
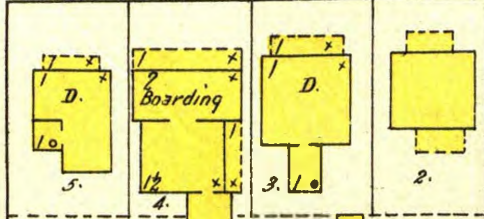
SMITH VALLE
 CAPACITY 133 GALLS
 A MINUTE



430 J. 428 K. 428 L. 426 M.

W. EXCELSIOR

429 N. 427 O. 425



19

3



W.L. STRAWSER
 WOOD WORKING SHOP

C R H V E N

Dry Fork of Fishing River

E X P O S U R E