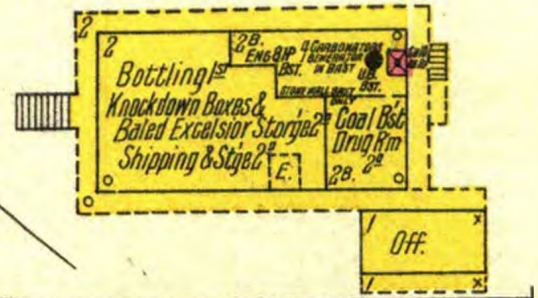
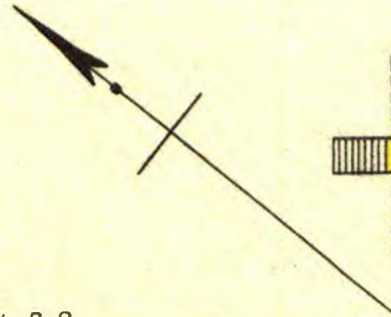


REGENT
SPRING
PAVILION.

Fishing

River

EXCELSIOR SPRINGS BOTTLING CO.
 1 NIGHT WATCHMAN. NO CLOCK. POWER. STEAM FUEL. COAL LIGHTS.
 ELECTRIC HEAT. STEAM IN BOTTLING WORKS & 2 STOVES IN OFFICE.
 CEMENT FLOOR IN BARSMT. & WATER BBLs ON 2^d FLOOR & 1 ON 1st FLOOR.
 EACH HAVING 2 BUCKETS.



Wabash R. R.