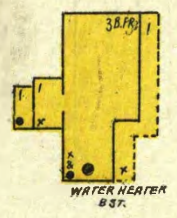


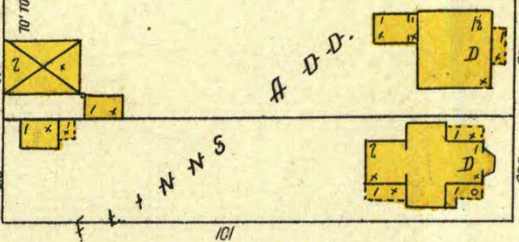
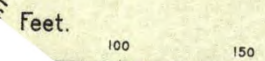
RELIEF HOTEL
HEAT: FURN. LIGHTS:
ELEG.



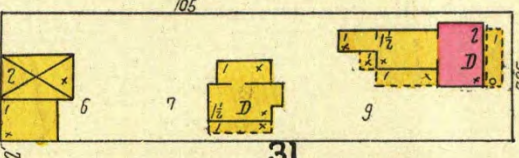
WATER HEATER
B.S.T.

RELIEF
SPRING

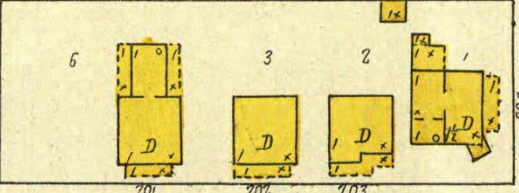
EXCELSIOR SPRINGS LIGHT, HEAT, POWER & WATER CO.
ELEC. LIGHT PLANT
OPERATED DAY & NIGHT. ZANTOS INDICATED
200' WIDE BTL. OR. POWER-STEM FUEL COAL.
LIGHTS: ELEC. CONCRETE IN BOLLER RM.



KANSAS



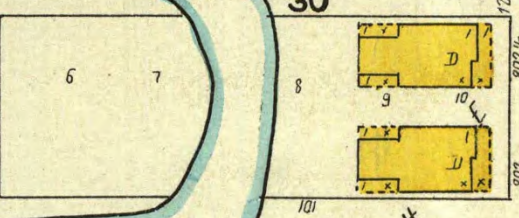
31



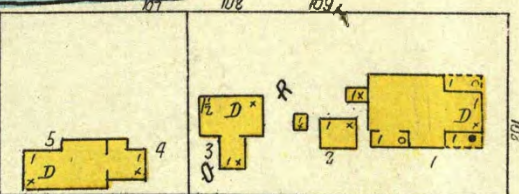
NORTH



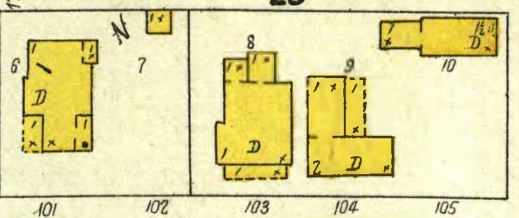
30



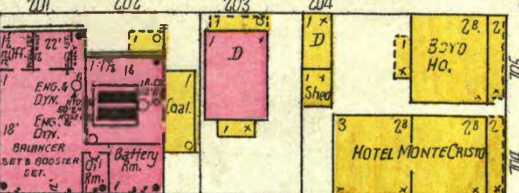
HILLTOP



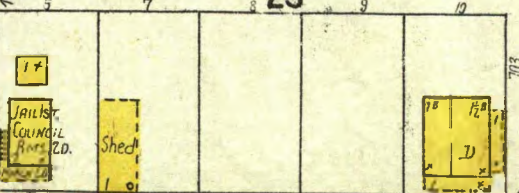
25



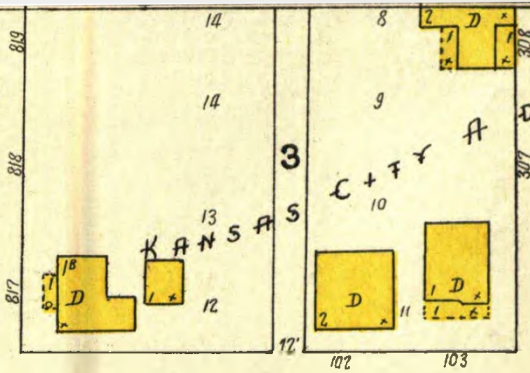
HILLSIDE



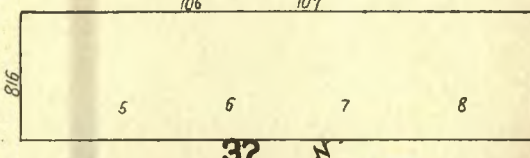
23



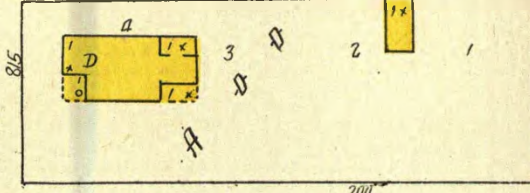
3



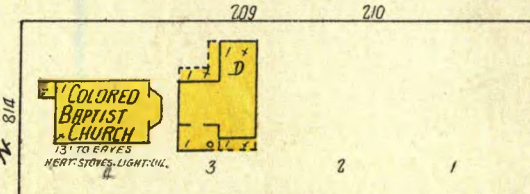
AV. (WASHINGTON)



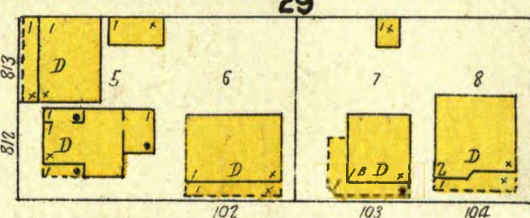
32



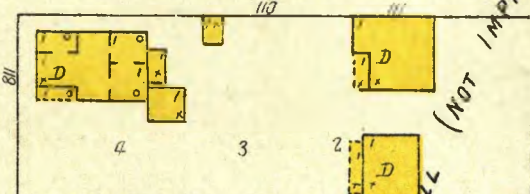
MAIN



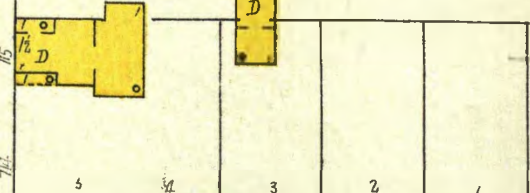
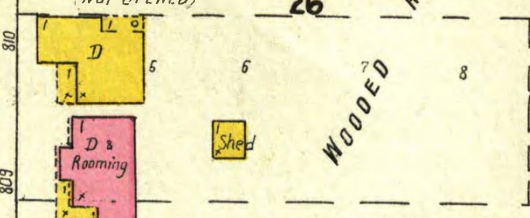
29



OUTLOOK



26

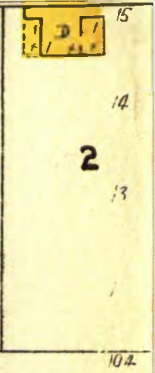


24

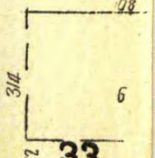


Excelsior Springs 1905

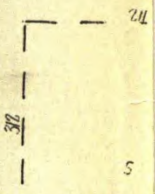
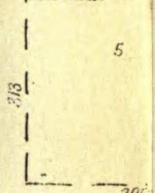
ELIZABETH



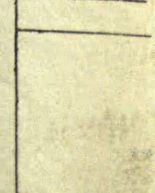
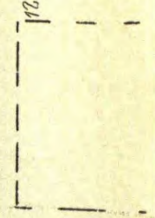
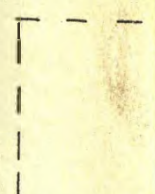
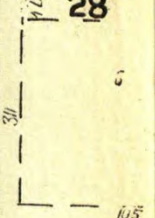
2



33



28



Excelsior Springs 1905

Map Division
Library of