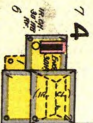


50' (10')

2

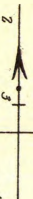


EXCELSIOR SPRINGS MILLS
WM. GARDNER, PROP.

PLANT 5
DYE HOUSE, HEAT: STEAM IN
OFF. LIGHTS: OIL LAMPERS
CITY WATER, CEMENT: 150
BRICKS IN 24 HOURS.
BEST 1 CROWN SHELLER
AS RE: 3 DOUBLE RAILS, 375-500
NEW, 1 PLUMBER
2004: 1 WRESTLER, 8 REZES
1 CRICKET



SPRING



50'

20'

60' CATHARINE

60'



14

15



M. E. CHURCH
SOUTH
HEAT: STEAM
LIGHTS: OIL
LAMPERS

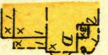
40'

40'

705

704

703



6

7

6

N.

40'

M.



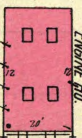
4

3

13



2



K.C.E.S. & N.R.R.
ENGINE HO.